


CIS Community Survey Feedback

 22 responses
 Enrolling years: ranged from 1999 to 2016
 >80% responses came from graduating class of 2018
 >60% of respondents studied at school for 7 - 10 years



School Staffing

- 81.8% of respondents agreed or strongly agreed that their teachers had the knowledge and skills to teach them well.

Students' Learning and Well-Being

- 90.9% of respondents agreed or strongly agreed that the school promoted a supportive environment for students' learning and well-being.



Teaching and Assessing for Learning

- 68.2% of respondents felt they left school feeling prepared emotionally to pursue their goals.
- 90.9% of respondents agreed or strongly agreed that their learning needs were adequately supported by the school.
- 95.5% of respondents agreed or strongly agreed that classes challenged them.

9 responses from 15 (60% return)

Community and Home Partnership

- 88.9% agreed or strongly agreed that the SLT promotes an atmosphere of collaboration and mutual respect, and 77.8% agreed that the school's marketing materials accurately reflect the school.

Premises and Physical Accommodation

- All respondents agreed or strongly agreed that the school provides a secure environment for all members of the school community.

School Staffing

- 66.7% agreed or strongly agree about being satisfied with the resources allocated to ongoing CPD for teachers and support staff.

Students' Learning and Well-Being

- All respondents agreed or strongly agreed that:
 - the school leadership promotes a supportive environment for students' learning and wellbeing.
 - they understand the school's policies on child protection.
 - appropriate policies are in place to respond to threats to health and safety.
 - appropriate policies are in place to respond to security threats.

Purpose and Direction

- All respondents felt the school's Guiding Statements are appropriate for the school.
- 55.5% of respondents agreed or strongly agreed that they regularly refer to the school's Guiding Statements.
- 66.7% agreed that the school has a contextually-appropriate definition of international and intercultural education to guide its practice.
- 22.2% agreed that they had been involved in the review and revision process of the school's Guiding Statements.

Governance, Leadership and Ownership

- All board members agreed or strongly agreed that the principal shows ultimate responsibility and accountability for the students' education and wellbeing.

The Curriculum

- All respondents agreed or strongly agreed that the curriculum reflects what the Mission says the school is trying to do.



Community and Home Partnership

- 309 parents (86.1%) do feel the school effectively manages parental communications.
- 291 parents (81%) feel the school includes them in decisions about their child's education.
- 273 parents (76%) feel they receive written information about the learning objectives and teachers' expectations for their child(ren)'s classwork.
- 293 parents (81.6%) feel the school programmes provide sufficient opportunities for their child(ren) to develop leadership skills
- 307 parents (85.5%) feel the school programmes provide sufficient opportunities for their child(ren) to participate in community service.
- 294 parents (81.9%) agree or strongly agree that they are involved in the life of the school in ways which benefit their child(ren)'s learning.

Premises and Physical Accommodation

- 309 parents (86%) are satisfied with the bus service.
- 266 parents (74.1%) are happy with the quality of food served at school, and 281 parents (78.3%) are happy with the nutritional value of the food.
- 349 parents (97.2%) agree or strongly agree that the school provides a secure environment for all members of the school community.

School Staffing

- 90.2% of parents agreed or strongly agreed that their child(ren)'s teachers have the necessary skills to teach the curriculum.

Students' Learning and Well-Being

- 315 parents (87.8%) agreed or strongly agreed that their child is appropriately supported emotionally.
- 98% of parents trust that their child is safe at school.
- 96.1% of parents trust that their child is safe on school trips.

359 respondents
 >65% have 1 child, nearly 30% with 2 children
 Most representation from Y8 parents, followed by Y7, and then Y9 - Y13 (in that order)

Purpose and Direction

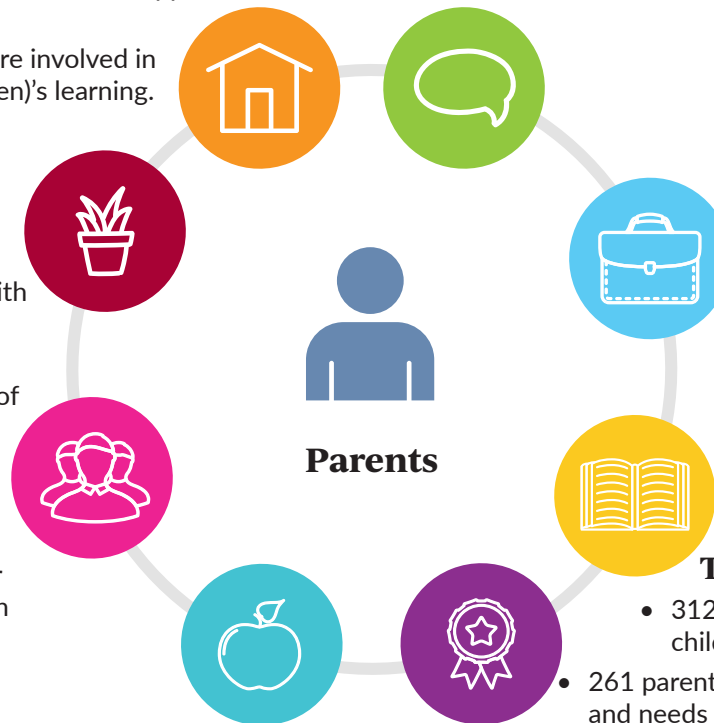
- 93.3% of respondents agreed or strongly agree that they understand the mission, vision and values of the school.

The Curriculum

- 315 parents (87.8%) agreed or strongly agreed that the curriculum provides their child with opportunities to learn about their own culture as well as other cultures.
- 298 parents (83%) agreed or strongly agreed that the school provides their child(ren) with sufficient opportunities to learn languages other than English.
- 316 parents (88%) agreed or strongly agreed that their child is appropriately supported academically.
- 317 parents (88.3%) felt the curriculum does meet their child(ren)'s needs.
- 312 parents (86.9%) felt the activities programme does match their child(ren)'s interests.

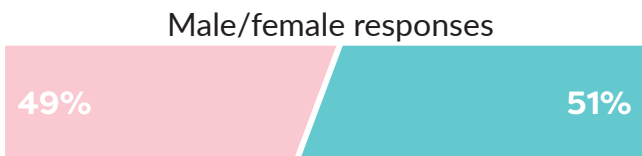
Teaching and Assessing for Learning

- 312 parents (86.9%) agreed or strongly agreed that their child(ren)'s learning needs are adequately supported by the school.
- 261 parents (72.7%) agreed or strongly agreed that the unique abilities and needs of their child(ren) were identified prior to entry into the school.
- 296 parents (82.5%) feel the school does provide sufficient information reflecting the achievement and progress of their child(ren).
- 317 parents (88.3%) understand their child(ren)'s marks/assessment grades.
- 307 parents (85.5%) agreed or strongly agreed that local cultures are used to enrich their child(ren)'s learning.
- 252 parents (70.2%) agreed or strongly agreed that the school has engaged with them on how best to support their child(ren)'s language development.





1,182 responses (94.6%)
Inverse relationship between year group and number of responses, i.e. fewest in Y13 and most in Y7/Y8
Over 50% of respondents speak 3 languages (over 73% speak 3 or more languages)

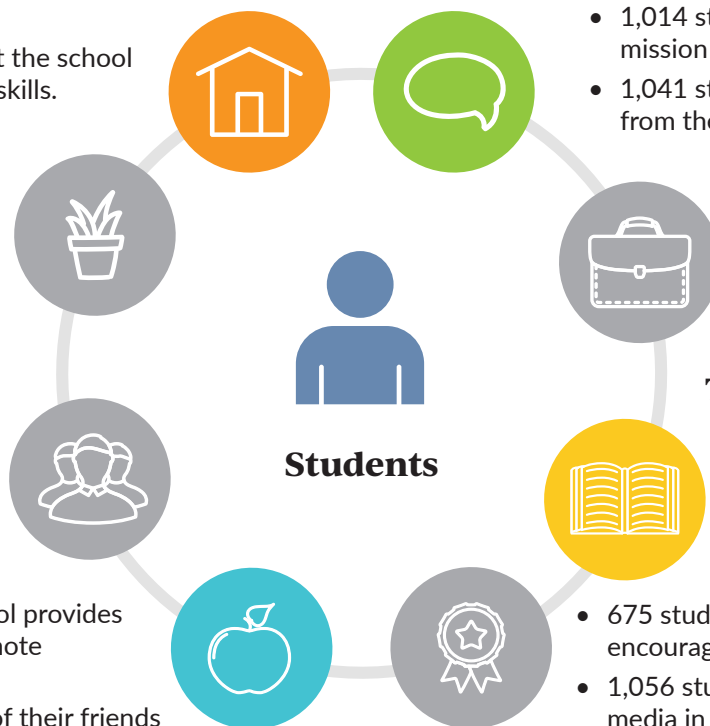


Community and Home Partnership

- 1,043 students (88.2%) agree or strongly agree that the school provides opportunities to develop their leadership skills.

Students' Learning and Well-Being

- 1,031 students (87.2%) feel the school environment supports their learning and wellbeing.
- 902 students (76.3%) feel they are encouraged to express their own views to the school on matters concerning their learning and wellbeing.
- 92.1% of students agree or strongly agree that the school provides them with opportunities to engage in service learning or community service.
- 94.1% of students agree or strongly agree that the school provides them with opportunities to engage in projects that promote environmental responsibility.
- 1,042 students (88.2%) know what to do if they or any of their friends experience bullying in school.
- 985 students (83.3%) feel the school provides a healthy and safe environment for all members of the school community.
- 1,020 students (86.3%) trust the school's emergency procedures for incidents such as fire, earthquakes or intruders.
- 94.5% of students agree or strongly agree that they feel safe going on school trips.
- 954 students (80.7%) feel supported by their teachers when they first started in the school.



Purpose and Direction

- 1,014 students (85.8%) feel they understand the school's vision, mission and values.
- 1,041 students (88.1%) feel they would get adequate assistance from the school staff if they were ill or injured.

The Curriculum

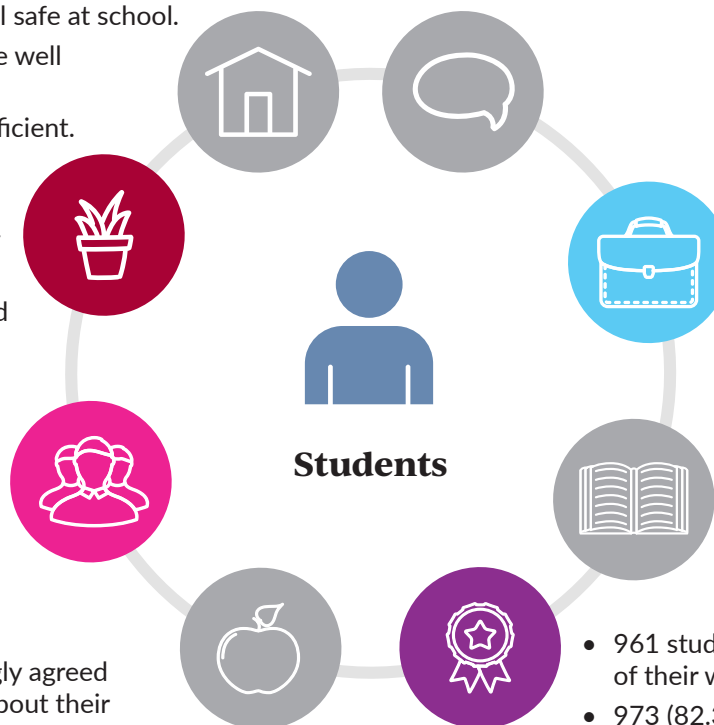
- 1,045 students (88.46%) feel their learning is interesting.
- 767 students (64.9%) agreed or strongly agreed that local language and culture are used to enhance their learning.
- 995 students (84.2%) feel they learn in class about cultures different to their own.
- 675 students (57.1%) agreed or strongly agreed that they are encouraged to share about their ethnic/cultural heritage.
- 1,056 students (89.3%) feel they are taught to use ICT and social media in a responsible way.
- 964 students (81.6%) feel they are taught to use technology effectively and have opportunities to enhance their ICT skills.
- 1,037 students (87.7%) feel their classes challenge them.
- 824 students (69.7%) feel the school supports them socially, and 736 students (62.2%) feel the school supports them emotionally.
- 855 students (72.3%) feel that activities programmes for students match their interests.

Premises and Physical Accommodation

- 939 respondents (79.4%) feel school premises and equipment are well maintained.
- 91.6% agreed or strongly agreed that the classroom and other teaching spaces provide an appropriate atmosphere for their learning.
- 90.7% of students agree or strongly agree that they feel safe at school.
- 972 students (82.28%) feel the school's ICT systems are well maintained and up to date.
- 676 students (57%) feel internet access at school is sufficient.
- 955 respondents (80.8%) feel the school is a clean and hygienic environment.
- 853 students (72.2%) agree or strongly agree that they are satisfied with the school's bus system.
- 622 students (52.6%) are happy with the quality of food served at the school; 725 students (61.3%) agree or strongly agree that they are happy with the nutritional value of the food at school.

School Staffing

- 1,025 students (86.7%) agreed or strongly agreed that their teachers are knowledgeable about their teaching subjects.
- 884 students (74.8%) agreed or strongly agreed that their teachers have good teaching skills.

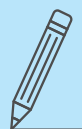


Governance, Leadership and Ownership

- 1,000 students (84.6%) agree or strongly agree that the school's mission, vision and values guide decision making at the school.

Teaching and Assessing for Learning

- 1,014 students (85.8%) feel their learning needs are adequately supported by the school.
- 961 students (81.3%) feel they are usually involved in the assessment of their work.
- 973 (82.3%) students feel they receive regular feedback on their own work, and 904 students (76.5%) feel they receive regular updates about their academic progress.
- 959 students (81.1%) agree or strongly agree that IT is used to enhance their learning.
- 944 students (79.9%) know where to go for support for their learning when they need it.
- 976 students (82.6%) feel the school does provide them with support if they need help with English (as the language of instruction).
- 751 students (63.5%) agree or strongly agree that the school recognises and provides resources related to the language they mainly speak at home.



51 respondents (78.5%)

Most of the respondents (35.3%) have worked at the school for 1 – 3 years, but there are representation from all categories of length of service from the survey

Male/female responses



64.7%

35.3%



Premises and Physical Accommodation

- 94.2% of respondents feel the school provides a secure environment for all members of the school community.

School Staffing

- 44 people (86.2%) agreed or strongly agreed that the school requires them to undergo background checks on a periodic basis.
- 42 people (82.3%) agreed or strongly agreed with there being a defined process and expectations for staff to receive CPD related the school's identified priorities.
- 46 people (90.2%) agreed or strongly agreed that they receive periodic feedback and supervision through the appraisal process, and 45 people (88.2%) feel appraisals of their performance are conducted fairly and in writing.

Students' Learning and Well-Being

- All respondents agreed or strongly agreed that they understand the school's policies on child protection.
- 46 people (90.2%) agreed or strongly agreed that they have confidence in their ability to detect child abuse.
- 40 people (78.5%) agreed or strongly agreed that effective procedures for emergency situations (that require a lockdown or response to natural disasters) are in place and regularly practiced.
- 46 people (90.2%) agreed or strongly agreed that the school facilitates awareness and understanding of local health services, local health requirements and potential health concerns.

Purpose and Direction

- 46 people (90.2%) agreed or strongly agreed that the Guiding Statements influence how the school operates.
- 42 people (82.3%) agreed or strongly agreed that they have been invited to discuss and/or review the school's Guiding Statements.

The Curriculum

- 43 people (84.3%) agreed or strongly agreed that aspects of the local language and culture are being used to enrich students' learning.
- 46 people (90.2%) agreed or strongly agreed that the school's curriculum provides children with opportunities to learn about their own culture as well as other cultures.



CIS Community Survey Feedback



84 respondents (86%)
Direct correlation between number of respondents and number of years of service in education (but representation from all categories, including number of years at the school)

Male/female responses



Premises and Physical Accommodation

- 69 teachers (82.1%) feel the school's ICT systems are well maintained and up to date.

School Staffing

- 72 teachers (85.7%) agreed that the school required them to undergo background checks on a periodic basis.
- 72 teachers (85.7%) felt the school provides CPD which is relevant to their needs, and seventy-three teachers (86.9%) feel the school provides CPD which supports students' learning.
- 73 teachers (86.9%) said they receive periodic feedback and supervision through the PRD process, and 65 teachers (77.4%) feel the appraisals of their performance is conducted fairly and in writing.



Teaching and Assessing for Learning

- 74 teachers (88.1%) feel there is sufficient learning support provided to students with special learning challenges to enable them to fulfil their potential.
- 61 teachers (72.6%) agreed or strongly agreed that teachers receive professional training and support to identify students with special learning needs, gifts and talents.
- 62 teachers (76.1%) feel they are informed about the unique abilities and needs of newly enrolled students before admission to their classes.
 - 74 teachers (88.1%) feel students' achievement data are used to identify students' accomplishments and gaps in learning.
- 59 teachers (70.2%) feel the cultural diversity of the school community is used to enrich teaching and learning.
- 74 teachers (88.1%) feel the school has systematic means for assessing, analysing, recording and reporting on school-wide performance.
- 72 teachers (85.7%) agreed or strongly agreed that assistance is provided to students in understanding and interpreting reports of students' engagement and achievement.
- 71 teachers (84.5%) feel assistance is provided to parents in understanding and interpreting reports of students' engagement and achievement.
- 70 teachers (83.3%) feel the school's schedule is planned and managed in such a way as to maximise the amount of time that students spend engaged in learning tasks.
- 57 teachers (67.8%) agree or strongly agree that teachers receive sufficient training to differentiate teaching to meet the needs of G&T students.
- Similarly, 56 teachers (66.6%) feel that they receive sufficient training to differentiate teaching to meet the needs of students with learning difficulties.
- 58 teachers (69%) feel the school supports the development of mother tongue languages.
- 63 teachers (75%) agree or strongly agree that the school helps teachers learn strategies to accommodate students who need English support.

Purpose and Direction

- 91.7% of respondents agreed or strongly agreed the school's Guiding Statements are appropriate for the school.
- 68 teachers (80.91%) agree or strongly agree that the Guiding Statements and their ethical basis influence how the school operates.
- 62 teachers (73.8%) agree or strongly agree that the school has a contextually-appropriate definition of international and intercultural education to guide its practices.
- 70 teachers (88.3%) agree or strongly agree that upon admission, and beyond, the school ensures that there is a reasonable match between the students' needs and the programme offered.
- 63 teachers (75%) agree or strongly agree that the review and evaluation of the Guiding Statements results in data that informs the school's direction.
- 55 teachers (65.6%) feel that school does have a clear definition of 'high quality learning' related to students' expected learning outcomes.

Governance, Leadership and Ownership

- 71 teachers (84.5%) feel the Head of School shows ultimate responsibility and accountability for the students' education and wellbeing.
- 74 teachers (88.1%) feel the actions of the school's leadership are aligned with the school's mission and values.
- 70 teachers (83.3%) feel the governance structure enables the school to have a clear and well defined direction.
 - 65 teachers (77.4%) agree that the Guiding Statements guide the school in decision making.
 - 70 teachers (83.3%) feel that Head of School and leadership team have the intercultural skills needed for the school's unique cultural context.
 - 64 teachers (76.2%) agree or strongly agree that the school's written policies are applied consistently.

Students' Learning and Well-Being

- 98.8% of teachers feel the school promotes a supportive environment for students' learning and wellbeing.
- 97.6% of respondents agreed or strongly agreed that they understand the school's policies on child protection.
- 65 teachers (77.4%) feel they are informed if any of their students have health conditions that might affect their performance in class.
- 60 teachers (71.5%) agreed or strongly agreed that effective procedures are in place for emergency situations that require a lockdown or response to natural disasters, and are regularly practised.
- 67 respondents (79.7%) think the school's programmes, services and environment encourage the adoption of healthy lifestyle choices.

The Curriculum

- 75 teachers (89.3%) agree that the school's curricular programmes are aligned with the school's mission
- 75 teachers (89.3%) feel the formal curriculum promotes the development of digital citizenship.
- 73 teachers (86.9%) feel the curriculum provides for the needs of the students at the school.
- 70 teachers (83.3%) agree that there is systematic review of the school's curriculum to ensure appropriate scope and sequence.
- 75 teachers (89.3%) feel the school encourages innovation of teaching strategies and assessment techniques.

