



(I)GCSE Provisional Results for 2018 - Sha Tin College

We are pleased to announce our 2018 results for the General Certificate of Secondary Education (GCSE) examinations and its international equivalent, the International General Certificate of Secondary Education (IGCSE).

As a result of reforms to the GCSE grading system in the UK, some subject grades this year have been graded using the new 9 to 1 system. A relatively small number of examinations (roughly 8% of all examinations across the ESF schools) were graded using the new 9 to 1 grading system. A grade 4 is broadly equivalent to a low grade C and a grade 8 or 9 is broadly equivalent to a grade A*, as shown in the image below:

How the new grades compare with the old ones

Old grades	New grades
A*	9
	8
A	7
B	6
	5 STRONG PASS
C	4 STANDARD PASS
D	3
E	2
F	1
G	
U	U

Source: Ofqual



Once again, Sha Tin College students have achieved an outstanding set of examination results. The overall results show that 94.9% of our examination grades were awarded A* to C, and 97.2% of grades awarded 9 to 4.

Below are the provisional overall results for (I)GCSE, for examinations graded using the traditional A*- G grading system.

Table 1: Overview of (I)GCSE Results

	STC 2018	ESF 2018	ESF 2017	ESF 2016	ESF 2015	UK average for GCSE (2017#)
A*	31%	32%	30%	27%	29%	7%
A* - A	60%	59%	57%	54%	55%	22%
A* - C	95%	94%	94%	93%	92%	67%

UK percentages for 2018 are currently unavailable, so 2017 percentages have been used.

The results are ESF's **highest** ever in terms of A* and A* - A. However, with many changes to examination boards, syllabi, and grading standards over the last few years, we need to approach historical comparisons with a degree of caution.

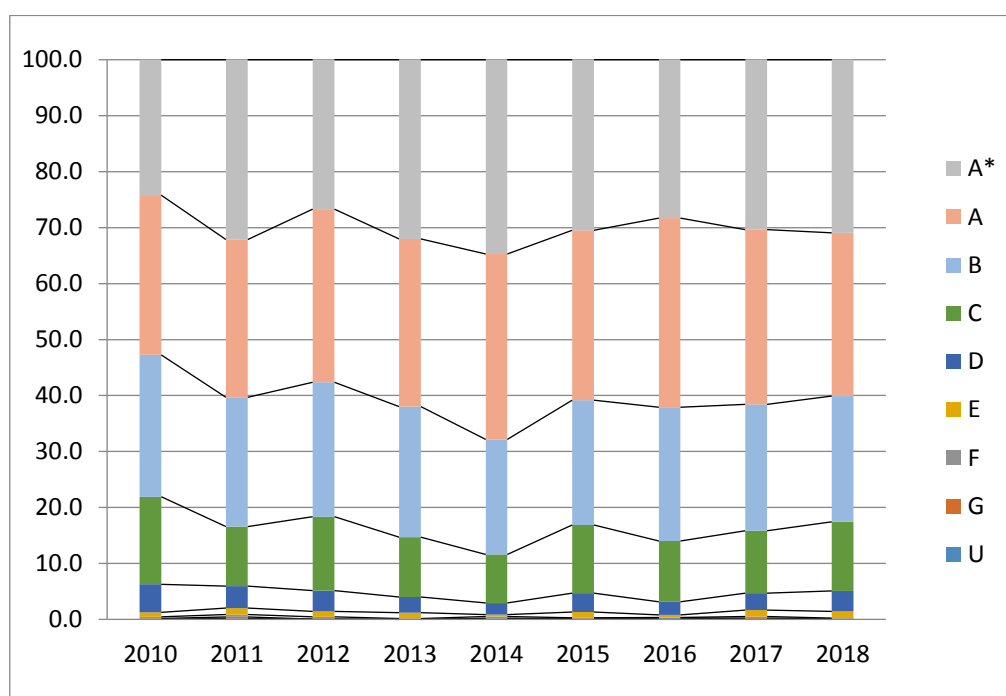
Table 2: Overview of (I)GCSE Results (9 to 1 system)

	STC 2018	UK average#
9	18.3%	3.1%
9 - 7	57.4%	18.6%
9 - 4	97.2%	70.9%

The UK data for 2017 is only for Mathematics, English Language and English Literature.

CAIE have indicated that they do not intend to move to the 9 to 1 system, so it is likely that we will continue to have both systems running in parallel for the foreseeable future.

Chart 1: Distribution of (I)GCSE Grades (STC, 2010 – 2018)



Please note that these are preliminary results, and the data do not yet reflect the outcomes of any appeals (remarks) that may be made regarding individual students and subjects.

Many congratulations to all of our students on their examination results. We wish them well in their post-16 studies.

Paul Hoang
Vice Principal

28th August 2018